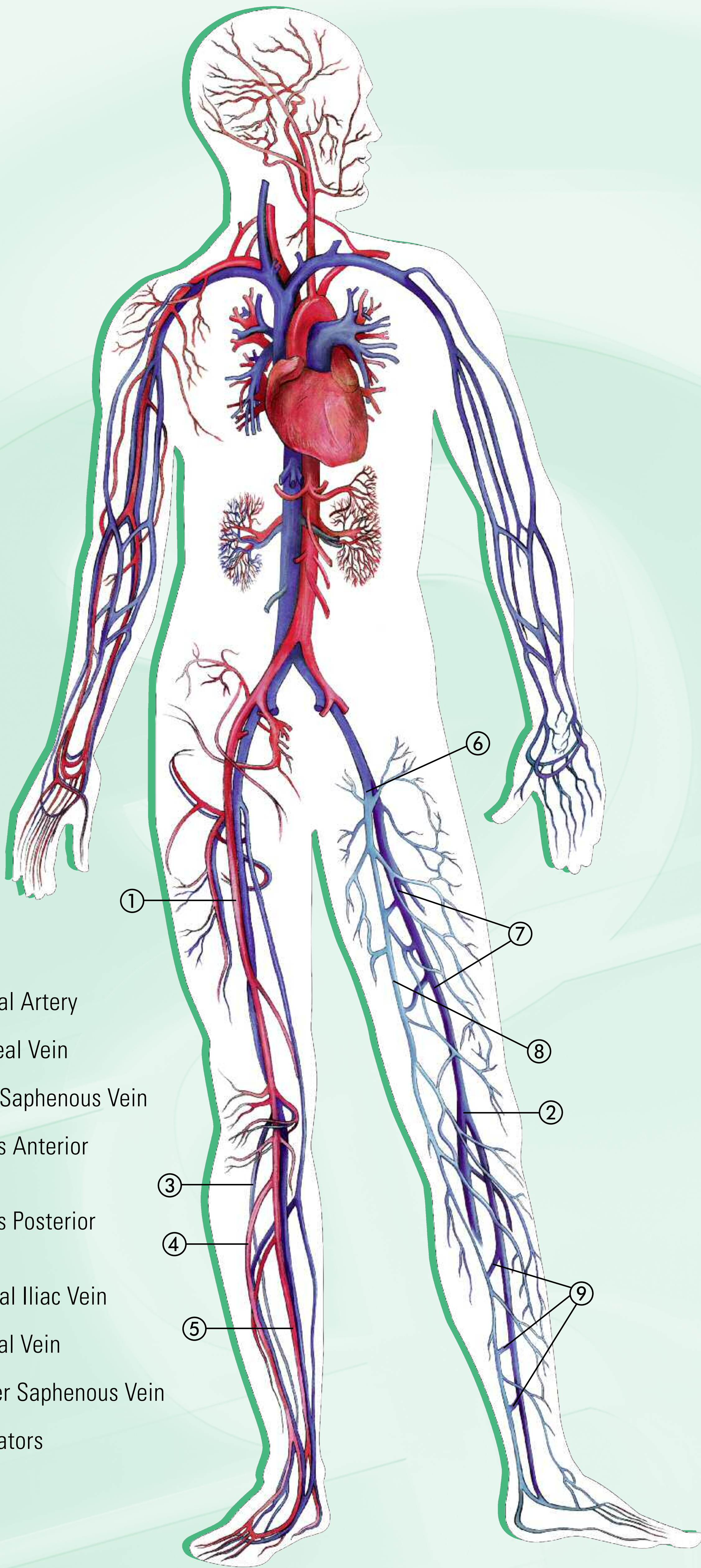
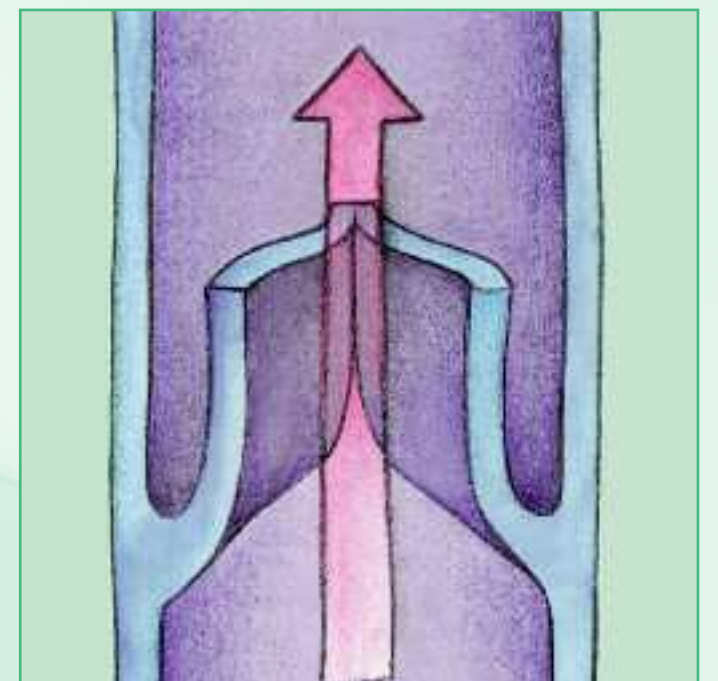


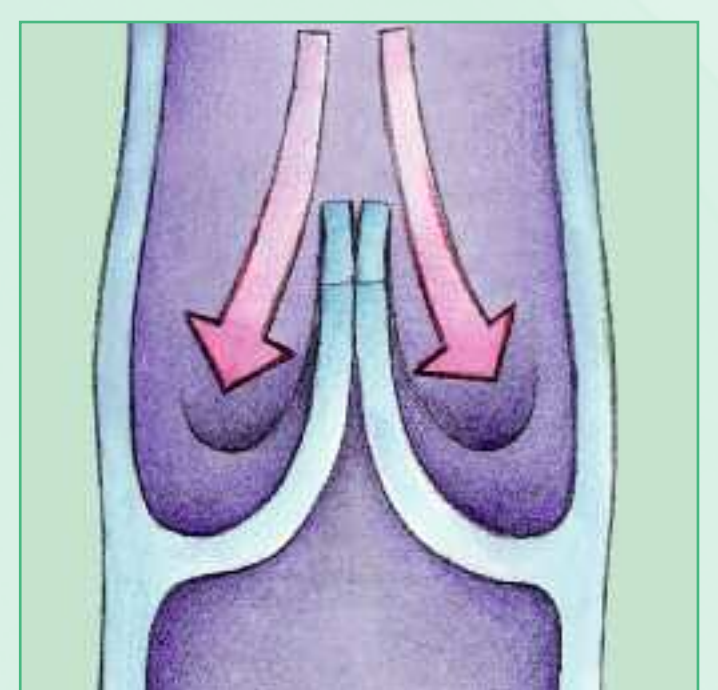
The blood circulation



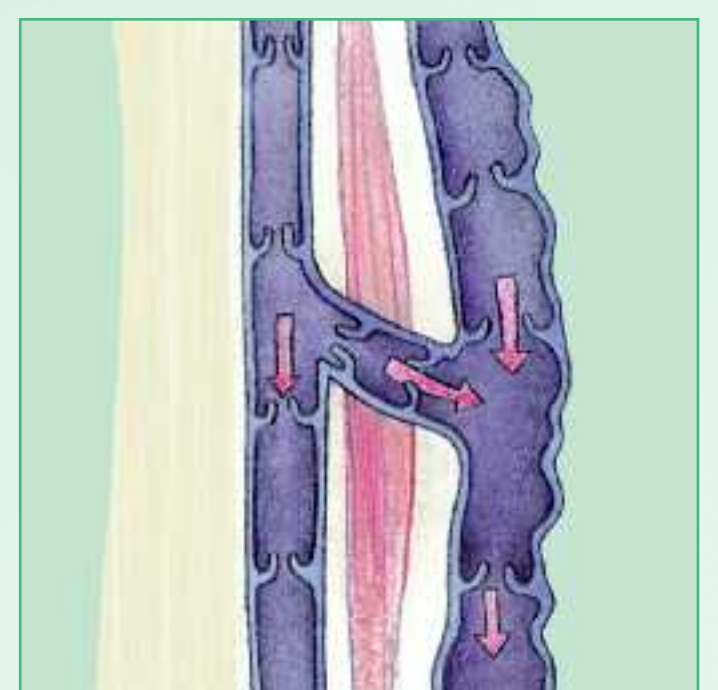
- ① Femoral Artery
- ② Popliteal Vein
- ③ Small Saphenous Vein
- ④ Tibialis Anterior Artery
- ⑤ Tibialis Posterior Artery
- ⑥ External Iliac Vein
- ⑦ Femoral Vein
- ⑧ Greater Saphenous Vein
- ⑨ Perforators



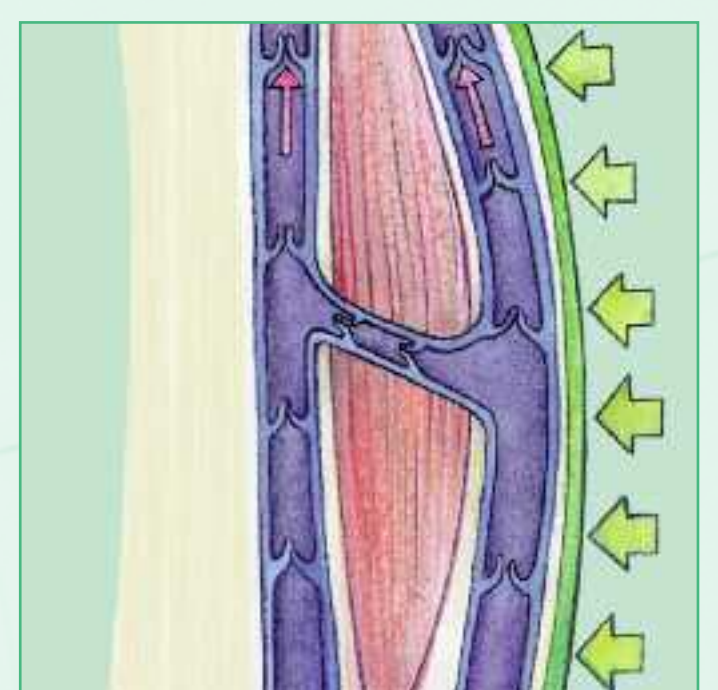
Venous valve open:
blood flows to the heart



Venous valve closed:
prevents back flow of blood



Vein walls are too weak or the
vein valves do not open and
close properly



A compression stocking
provides external support
to the vein wall

The Juzo® product range for an efficient compression therapy



Juzo® Attractive
The fashionable transparent



Juzo® Hostess®
The timeless elegant



Juzo® Soft
The super soft multifunctional



Juzo® Dynamic
The tough